



Working together  
www.rcis.ro

## **Revista de cercetare și intervenție socială**

ISSN: 1583-3410 (print), ISSN: 1584-5397 (electronic)

Selected by coverage in Social Sciences Citation Index, ISI databases

---

### **CORRELATIONS BETWEEN NUTRITIONAL SCREENING SCORE AND ANTHROPOMETRIC PARAMETERS IN INSTITUTIONALIZED ELDERLY**

*Laura MIHALACHE, Otilia NITA, Andreea GHERASIM, Alina Delia POPA,  
Mariana GRAUR, Lidia Iuliana ARHIRE*

Revista de cercetare și intervenție socială, 2015, vol. 50, pp. 111-121

The online version of this article can be found at:

*www.rcis.ro, www.doaj.org and www.scopus.com*

---

Published by:

Expert Projects Publishing House



On behalf of:

„Alexandru Ioan Cuza” University,

Department of Sociology and Social Work

and

Holt Romania Foundation

REVISTA DE CERCETARE SI INTERVENTIE SOCIALA

is indexed by ISI Thomson Reuters - Social Sciences Citation Index

(Sociology and Social Work Domains)



# Correlations between Nutritional Screening Score and Anthropometric Parameters in Institutionalized Elderly

Laura MIHALACHE<sup>1</sup>, Otilia NITA<sup>2</sup>, Andreea GHERASIM<sup>3</sup>, Alina Delia POPA<sup>4</sup>, Mariana GRAUR<sup>5</sup>, Lidia Iuliana ARHIRE<sup>6</sup>

## Abstract

The aim of this study is to assess nutritional status in a group of institutionalized elderly and to establish correlations between nutritional screening score and anthropometric parameters. We analyzed a sample of 156 seniors, 62 (39.7%) men, 94 (60.3%) women, to whom we performed nutritional screening using Mini Nutritional Assessment - MNA and we evaluated anthropometric parameters (body mass index - BMI, waist circumference - WC, calf circumference - CC and mid-upper arm circumference - MUAC). In the group of elderly institutionalized to whom the MNA has been applied, 69.2% had optimal nutritional status, 24.4% had a score of screening indicating risk of malnutrition and 6.4% had a screening score corresponding to malnutrition. A significantly higher percentage of women had a screening score indicating malnutrition (9.6% vs. 1.6%) and a screening score showing risk of malnutrition (26.6% vs. 21%) ( $p=0.029$ ). Analysis by gender showed strong correlation between BMI and WC value ( $r = 0.869$ ) in men, and

<sup>1</sup> University of Medicine and Pharmacy “Grigore.T.Popa” Iasi, Faculty of Medicine, Department of Diabetes, Nutrition and Metabolic Diseases, Iasi, ROMANIA. E-mail: laura\_mvlad@yahoo.com

<sup>2</sup> University of Medicine and Pharmacy “Grigore.T.Popa” Iasi, Faculty of Medicine, Department of Diabetes, Nutrition and Metabolic Diseases, Iasi, ROMANIA. E-mail: otyca95@yahoo.com (corresponding author)

<sup>3</sup> University of Medicine and Pharmacy “Grigore.T.Popa” Iasi, Faculty of Medicine, Department of Diabetes, Nutrition and Metabolic Diseases, Iasi, ROMANIA. E-mail: anny\_gh2005@yahoo.com

<sup>4</sup> University of Medicine and Pharmacy “Grigore.T.Popa” Iasi, Faculty of Medicine, Department of Nursing, Iasi, ROMANIA. E-mail: roxyal04@gmail.com

<sup>5</sup> University of Medicine and Pharmacy “Grigore.T.Popa” Iasi, Faculty of Medicine, Department of Diabetes, Nutrition and Metabolic Diseases, Iasi, ROMANIA. E-mail: graur.mariana@gmail.com

<sup>6</sup> University of Medicine and Pharmacy “Grigore.T.Popa” Iasi, Center for Health Policy and Ethics Iasi, ROMANIA. E-mail: lidia\_graur@yahoo.com

between MUAC and CC value ( $r = 0.838$ ) in women ( $p < 0.001$ ). Nutritional screening score was positively correlated with all anthropometric parameters ( $r > 0.400$ ,  $p < 0.001$ ), the strongest correlation being recorded with CC ( $r = 0.528$ ). MNA short form (MNA-SF) represents a useful tool for rapid nutritional screening of elderly, enabling the identification of individuals at risk for malnutrition and those with a score indicating malnutrition. Calf circumference is a parameter which is positively correlated with nutritional screening score in institutionalized elderly population, and can be proposed as a starting point in nutritional assessment algorithm.

*Keywords:* elderly, nutritional status, nutritional screening algorithm, institutionalized elderly, quality of life.

## Introduction

Significant changes in the population structure of Romania have contributed greatly to increased dependency ratio and aging index. Rapidly increasing number of older people worldwide was characterized as a “Gray Tsunami” (Walker *et al*, 2012). Romania, like all European and developing countries with aging (WHO, 2014a, Luppá *et al*, 2010), has an increasingly degree of institutionalization of the elderly, both in private centers and in the state ones. Institutionalized elderly are more exposed to risk and health problems, which compromise their quality of life (Zaidi *et al*, 2013). Nutritional status of hospitalized or institutionalized elderly is often poor (de Lima, Moraes & Souza, 2012) and this should require particular attention in health care services, especially since social (Esmayel *et al*, 2013), psychological (Cederholm, 2003), cognitive (Gillette-Guyonnet, 2009) or functional problems (Oliveira, Fogaça & Leandro-Merhi, 2009) influencing negatively nutritional status add to the existing medical pathology (Rosen & Reuben, 2011). Malnutrition has negative consequences on these persons morbidity and mortality (Hickson, 2006, Raynaud-Simon, 2009a, Saunders & Smith, 2010), with increasing frequency of addressing health services, higher length of stay in hospital, increased risk of complications and beyond, pressure ulcers, increased need for institutionalization (Harris & Haboubi, 2005, Stratton, Green & Elia, 2003, Raynaud-Simon, 2009b, Badia *et al*, 2015). In this context, it becomes obvious the need for early and rapid identification of individuals at risk of malnutrition, for the establishment of a comprehensive evaluation algorithm and possibly specific treatment. In this sense, investigating the nutritional status in geriatric institutions becomes fundamental to the development of health politics for improvement of care and prognostic (British Geriatric Society, 2011). In the literature, at present day, there is no consensus on the optimal screening test (Wells & Dumbrell, 2006, Leandro-Merhi & De Aquino, 2011), taking into

account that classical biological and anthropometric parameters have limitations arising from changes associated with aging (Aussel & Cynober, 2009). The objectives of this research were nutritional characterization of a community of institutionalized elderly, and studying the relationship between the screening score obtained by evaluating MNA-SF and anthropometric parameters, which could lead to the proposal of a simple algorithm of nutritional assessment for older people, useful in communities and primary care.

## Material and methods

≥

The study was conducted in “St. Parascheva” Nursing Home in Iasi. After signing informed consent, each participant was drawn up an evaluation sheet that contained personal data (age, sex) and clinical and nutritional assessment information. Anthropometric parameters analyzed were: current weight (in kg), body mass index (BMI, kg/m<sup>2</sup>), waist circumference (WC, in cm) using standardized and calibrated equipment. Defining weight status was based on BMI values according to World Health Organization (WHO) criteria (WHO, 2014b): underweight (BMI < 18.5 kg/m<sup>2</sup>), normal weight (BMI between 18.5 and 24.9 kg/m<sup>2</sup>) and excess weight (overweight and obesity, BMI ≥ 25 kg/m<sup>2</sup>, respectively BMI ≥ 30 kg/m<sup>2</sup>) and based on the WC values according to IDF criteria: thick waist, when WC values ≥ 94 cm in men and ≥ 80 cm in women (Zimmet, Alberti & Shaw, 2005). To complete anthropometric assessment, the calf circumference (CC) (Kawakami *et al.*, 2014, Kaiser *et al.*, 2009) and mid-upper arm circumference - MUAC, in cm, were measured to each person included in the study. MUAC is measured in the left arm, at the midpoint between the tip of the shoulder and the tip of the elbow (olecranon process and acromium) and is a reproducible and fit for screening measurement, especially for acute malnutrition (Bur *et al.*, 2000).

The form MNA - Mini Nutritional Assessment (translated in Romanian) was used for nutritional assessment, a non-invasive screening and evaluation tool, validated for use both in hospital environment and in institutions providing care for the elderly (Guigoz, Vellas & Garry, 1996). MNA short form (MNA-SF) contains items that allow obtaining both a nutritional screening score and nutritional assessment of the elderly (Secher M *et al.*, 2009, Guigoz, 2006). Regarding nutritional screening score, values between 12-14 indicate normal nutritional status, values between 8-11 indicate risk of malnutrition and values below 7 indicate malnutrition (Reuben, Greendale & Harrison, 1995). Statistical analysis of data was performed using SPSS 13.0.

## Results

This study included 156 individuals, with a mean age of  $78.37 \pm 7.211$  years (fig.1), 62 men (39.7%) and 94 women (60.3%).

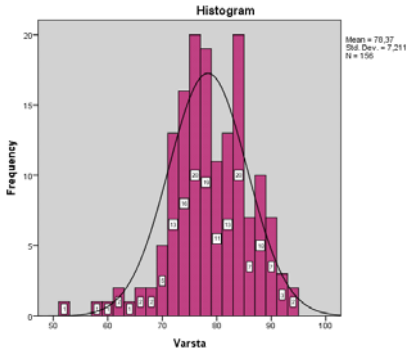


Figure 1. Sample characterization in terms of age

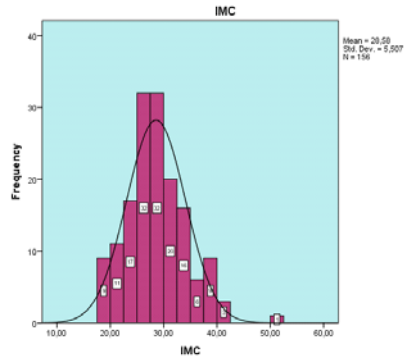


Figure 2. Sample characterization in terms of BMI

To calculate the screening score BMI was used (Figure 2) and on that basis we classified individuals into 3 categories of weight: 3 persons (1.9%) with weight deficit, 34 persons (21.8%) were normal weight individuals and 119 (76.3%) with excess weight (overweight and obesity). Mean value of WC was  $100.78 \pm 13.49$  cm (Figure 3a), 87.2% (136 persons) having thick waist, meaning 80.64% of men and 91.48% of women, gender difference being statistically significant ( $p = 0.042$ ) (Figure 3b).

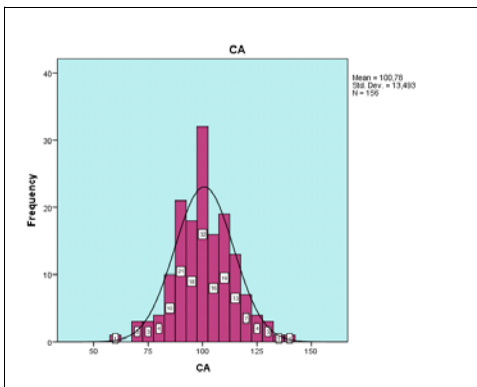


Figure 3a. Sample characterization in terms of WC total sample

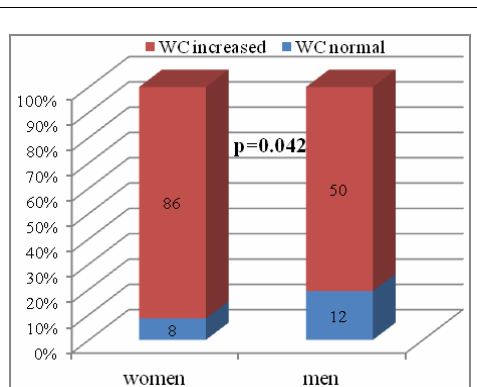


Figure 3b. Sample characterization in terms of gender analysis

Mean value of MUAC was  $29.12 \pm 4.71$  cm (Figure 4) and of CC was  $34.260 \pm 5.14$  cm (Figure 5). Results on nutritional screening score were: 108 people (69.2%) had a score of 12-1, meaning they had normal nutritional status, 38 people (24.4%) had a score of 8-11, therefore risk of malnutrition, and the remaining 10 persons (6.4%) had a score  $\leq 7$ , a score indicator of malnutrition. Analysis by gender showed that a significantly higher percentage of women had a screening score showing malnutrition than men (9.6% vs. 1.6%) ( $p = 0.029$ ), 77.4% of men having a screening score indicator for normal nutritional status (vs. 63.8% of women), and 21% of men having a screening score indicator for risk of malnutrition (vs. 26.6% of women). In Table 1 are included descriptive characteristics of the parameters analyzed.

Table 1. Descriptive characteristics of the parameters analyzed in terms of nutritional screening score

Score screening	N	Mean	Std. Deviation	95% Confidence Interval for Mean		min	max	
				Lower Bound	Upper Bound			
BMI	12-14	108	29.5296	4.93824	28.5876	30.4716	19.70	41.50
	8-11	38	28.0289	5.78086	26.1288	29.9291	19.50	50.10
	?7	10	20.4000	2.90784	18.3199	22.4801	17.50	27.00
	Total	156	28.5788	5.50657	27.7079	29.4498	17.50	50.10
WC	12-14	108	103.95	11.012	101.85	106.05	77	133
	8-11	38	97.68	14.125	93.04	102.33	77	140
	?7	10	78.20	12.072	69.56	86.84	60	98
	Total	156	100.78	13.493	98.64	102.91	60	140
MUAC	12-14	108	30.16	4.158	29.36	30.95	20	53
	8-11	38	27.92	4.862	26.32	29.52	21	46
	?7	10	22.50	3.440	20.04	24.96	15	26
	Total	156	29.12	4.711	28.38	29.87	15	53
CC	12-14	108	35.750	4.1291	34.962	36.538	26.0	48.0
	8-11	38	31.947	5.4024	30.172	33.723	25.0	54.0
	?7	10	26.950	4.9129	23.436	30.464	19.5	34.0
	Total	156	34.260	5.1423	33.446	35.073	19.5	54.0

All individuals with weight deficit according to BMI had a screening score indicator for malnutrition and only 6 people (17.6%) of those with normal BMI had a screening score  $d \leq 7$ ; 11 normal weight individuals (32.4%) and 27 individuals with excess weight (22.7%) had a screening score showing risk of malnutrition, the differences between percentages being statistically significant ( $p < 0.001$ ). The analysis conducted according to value of WC showed that 8 people (40%) of those with normal WC had normal nutritional screening score vs. 100 people (73.5%) of those with large WC, 7 people (35%) of those with normal WC had a screening score indicator for risk of malnutrition vs. 31 persons (22.8%) of those with large WC, and 5 people (25%) of those with normal WC had a screening score indicating malnutrition vs. 5 people (3.7%) of those with large WC, the differences between percentages being statistically significant ( $p < 0.001$ ) (Table 2).

Table 2. Sample characteristics according to nutritional screening score and anthropometric parameters

		Screening score			p
		12-14	8-11	0-7	
BMI	Denutrition	-	-	3 (100%)	<0.001
	Normal weight	17 (50%)	11 (32.4%)	6 (17.6%)	
	Excess weight	91 (76.5%)	27 (22.7%)	1 (0.8%)	
WC	Normal	8 (40%)	7 (35%)	5 (25%)	<0.001
	Large	100 (73.5%)	31 (22.8%)	5 (3.7%)	

Statistical analysis showed a high positive correlation ( $r > 0.700$ ), statistically significant ( $p < 0.001$ ) between BMI and all other anthropometric parameters analyzed (WC, MUAC and CC) (Figure 6). The same correlation is observed when conducting gender analysis, maintaining statistical significance, the strongest correlations being found between BMI and WC in men ( $r \hat{=} 0.869$ ), and between MUAC and CC in women ( $r = 0.838$ ).

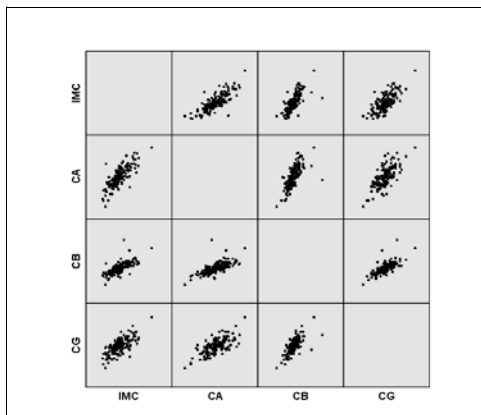


Figure 6. Correlations between anthropometric parameters

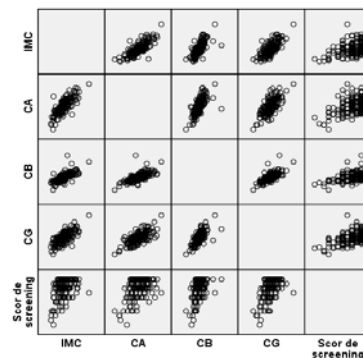


Figure 7. Correlations between nutritional screening score and anthropometric parameters

The same positive correlation, statistically significant ( $p < 0.001$ ) was observed between the value of nutritional screening score and all anthropometric parameters analyzed, the strongest correlation being recorded with CC value ( $r = 0.528$ ) (Figure 7).

## Discussion

In the group of institutionalized elderly where the MNA-SF form was applied, 69.2% had optimal nutritional status, 24.4% had a screening score indicator of risk of malnutrition and 6.4% had a screening score appropriate for malnutrition. Compared with men, a significantly higher percentage of women had a screening score of malnutrition (9.6% vs 1.6%) and a screening score indicator of risk of malnutrition (26.6% vs 21%) ( $p = 0.029$ ). In the total sample, all anthropometric parameters analyzed were positively correlated, statistically significant with each other ( $r > 0.700$ ,  $p < 0.001$ ). Analysis by gender showed a strong correlation between BMI and WC values ( $r = 0.869$ ) in men, and between MUAC and CC values ( $r = 0.838$ ) in women ( $p < 0.001$ ). Nutritional screening score was positively correlated, statistically significant, with all anthropometric parameters analyzed ( $r > 0.400$ ,  $p < 0.001$ ), the strongest correlation being recorded with CC value ( $r = 0.528$ ). Our results add to existing international data on the evaluation of nutritional status in the elderly. Thus, a Swedish study published in 2005, performed on a population with a mean age of 85.5 years, reported a malnutrition prevalence of 30% and 59% risk of malnutrition (Olin Odlund, Koochek, Ljungqvist & Cederholm, 2005). A Finnish study reported a malnutrition prevalence of 3%, malnutrition risk of 48% and the remaining 49% had optimal nutritional status, assessed via the MNA form. Arm circumference was among parameters that correlated most strongly with the total score of the MNA. At the same time, the authors reported strong correlations, statistically significant, between BMI and MUAC and CC (Soini, Routasalo & Lagström, 2004). Calf circumference value was shown to be a relevant marker of nutritional assessment in other studies (Portero-McLellan *et al*, 2010). Thus, a study performed in a geriatric unit showed the existence of statistically significant correlations between CC value and the usual anthropometric parameters (BMI,  $r = 0.706$ ,  $p < 0.001$ ; tricipital fold,  $p < 0.001$ ) or biological (albumin,  $r = 0.219$ ,  $p < 0.001$ ; transthyretin,  $r = 0.162$ ,  $p < 0.001$ ), the limit value of 30.5 cm even having diagnostic value (Bonney, Jauffret, Kostka & Jusot, 2002). The importance and usefulness of the MNA-SF in nutritional assessment of the elderly has been demonstrated, including in acute episodes, being a quick tool for estimating mortality (Lilamand *et al*, 2015, Lundin *et al*, 2012, Formiga *et al*, 2010). Thus, it has been demonstrated that less than 1/3 of hospitalized elderly with acute conditions had optimal nutritional status and mortality at 1 year, 2 to 3 years is higher in patients classified as malnourished based on MNA (Persson, Brismar, Katzarski, Nordenström & Cederholm, 2002). Moreover, a study published in 2013 showed that the short form of MNA has at least the same ability as the original form of MNA in what concerns prediction of mortality at 4 years, (Wang & Tsai, 2013) suggesting that the short form, which includes calf circumference measurement, could represent a comprehensive tool in nutritional screening on geriatric population (Tsai, Chang & Wang, 2013).



MNA-SF associated with CC is better as a screening test than MNA with BMI in a Spanish study conducted on institutionalized elderly (Garcia-Meseguer & Serrano-Urrea, 2013). Our study is only a preliminary step in nutritional assessment of institutionalized elderly in this unit. Next steps will include completing existing data with items included in the evaluation score and MNA total score, allowing a complete characterization of these individuals. One of the limitations of the study could be the fact that no specific nutritional biological exploration was carried out, enabling the extraction of correlations with anthropometric parameters and screening and nutritional evaluation scores.

### **Conclusions**

MNA short form (MNA-SF) is a useful tool for rapid nutritional screening of elderly, enabling the identification of individuals at risk for malnutrition and those with a score indicating malnutrition. Classic anthropometric parameters retain their usefulness in nutritional assessment of geriatric population. Calf circumference value is a parameter which is positively correlated, statistically significant, with the score of nutritional screening in the elderly population studied, and can be proposed as a starting point in nutritional assessment algorithm.

### **Acknowledgments**

This work received financial support through the project “Program of Excellence in multidisciplinary doctoral and postdoctoral research in chronic diseases”, contract no. POSDRU/159/1.5/S/133377, beneficiary “Gr. T. Popa” University of Medicine and Pharmacy Iasi, co-financed from the European Social Fund through Sectoral Operational Programme Human Resources Development 2007-2013.

## References

- Aussel, C., Cynober L. (2009). Méthodes diagnostiques de la dénutrition chez la personne âgée. In Hébuterne X. *et al. Traité de nutrition de la personne âgée*. Springer-Verlag France, pp. 143-157.
- Badia T., Formiga F., Ferrer A., Sanz H., Hurtos L., & Pujol R. (2015). Multifactorial assessment and targeted intervention in nutritional status among the older adults: a randomized controlled trial: the Octabaix study. *BioMed Central Geriatrics*, 15, 45. Doi 10.1186/s12877-015-0033-0.
- Bonnefoy, M., Jauffret, M., Kostka, T., & Jusot, JF. (2002). Usefulness of calf circumference measurement in assessing the nutritional state of hospitalized elderly people. *Gerontology*, 48, 162-169.
- Bur A., Hirsch, M.M., Herkner, H., Oschatz, E., Kofler, J., Woisetschlager, C., & Laggner, A. (2000). Accuracy of oscilometric blood pressure measurement according to the relation between cuff size and upper-arm circumference in critically ill patients. *Critical Care Medicine*, 28(2), 371-376.
- Cederholm T. (2003). Psychological effects of generalized nutritional deprivation in the elderly. *Scandinavian Journal of Nutrition*, 47(3), 143-146.
- de Lima C.B.V., Moraes F.L., & Cristine Souza L.A. (2012). Nutritional Status and Associated Factors in Institutionalized Elderly. *Journal of Nutritional Disorders & Therapy* 2, 116. doi:10.4172/2161-0509.1000116.
- Esmayel E.M.M., Eldarawy M.M., Hassan M.M.M., Hasanin H.M., Ashour W.M.R., & Mahmoud W. (2013). Nutritional and Functional Assessment of Hospitalized Elderly: Impact of Sociodemographic Variables. *Journal of Aging Research*, article ID 101725, doi: 10.1155/2013/101725.
- Formiga F., Ferrer A., Montero A., Chivite D., & Pujol R. (2010). Predictors of 3-year mortality in subjects over 95 years of age. The NONASANTFELIU study. *The Journal of Nutrition, Health & Aging*, 14(1), 63-65.
- Garcia-Meseguer, M.J., Serrano-Urrea, R. (2013). Validation of the revised mini nutritional assessment short-forms in nursing homes in Spain. *The Journal of Nutrition, Health & Aging*, 17(1), 26-29.
- Gillette-Guyonnet S. (2009). Nutrition and fonctions cognitives. In Hébuterne X. *et al. Traité de nutrition de la personne âgée*. Springer-Verlag France, pp. 83-88.
- Guigoz, Y., Vellas, B., & Garry, P. (1996). Assessing the nutritional status of the elderly: the Mini Nutritional Assessment as part of the geriatric evaluation. *Nutrition Reviews*, 54(2), 59-65.
- Guigoz Y. (2006). The Mini Nutritional Assessment (MNA) review of the literature - What does it tell us? *J Nutr Health Aging* ;10(6):466-485.
- Harris, D., & Haboubi, N. (2005). Malnutrition screening in the elderly population. *Journal of the Royal Society of Medicine*, 98, 411-414.
- Hickson M. (2006). Malnutrition and ageing. *Postgraduate Medical Journal*, 82(963), 2-8.
- Kaiser M.J., Bauer J.M., Ramsch C., Uter W., Guigoz Y., Cederholm T., et al. (2009). Validation of the Mini Nutritional Assessment short-form (MNA-SF): a practical tool for identification of nutritional status. *The Journal of Nutrition, Health and Aging*, 13, 782-788.

- Kawakami, R., Murakami, H., Sanada, K., Tanaka, N., Sawada, S.S., Tabata, I., Higuchi, M., & Miyachi, M. (2014). Calf circumference as a surrogate marker of muscle mass for diagnosing sarcopenia in Japanese men and women. *Geriatrics & Gerontology International*, DOI: 10.1111/ggi.12377.
- Leandro-Merhi V.A., De Aquino J.L. (2011). Anthropometric parameters of nutritional assessment as predictive factors of the Mini Nutritional Assessment (MNA) of hospitalized elderly patients. *The Journal of Nutrition, Health and Aging*, 15(3), 181-186.
- Lilamand M., Kelaiditi E., Demougeot L., Rolland Y., Vellas B., & Cesari M. (2015). The Mini Nutritional Assessment – Short Form and mortality in nursing home residents – results from the INCUR study. *The Journal of Nutrition, Health and Aging*, 19(4), 383-388.
- Lundin H., Sääf M., Strender L.E., Mollasaraie H.A., & Salminen H. (2012). Mini nutritional assessment and 10-year mortality in free-living elderly women: a prospective cohort study with 10-year follow-up. *European Journal of Clinical Nutrition*, 66(9), 1050-1053.
- Luppa M., Luck T., Weyerer S., König H.H., Brähler E., & Riedel-Heller S.G. (2010). Prediction of institutionalization in the elderly. A systematic review. *Age and Ageing*, 39, 31-38.
- Olin Odlund, A., Koochek, A., Ljungqvist, O., & Cederholm, T. (2005). Nutritional status, well-being and functional ability in frail elderly service flat residents. *European Journal of Clinical Nutrition*, 59, 263-270.
- Oliveira M.R.M, Fogaça K.C.P., & Leandro-Merhi V.A. (2009). Nutritional status and functional capacity of hospitalized elderly. *Nutrition Journal*, 8, 54. doi:10.1186/1475-2891-8-54.
- Persson, M.D., Brismar, K.E., Katzarski, K.S., Nordenström, J., & Cederholm, T.E. (2002). Nutritional Status Using Mini Nutritional Assessment and Subjective Global Assessment Predict Mortality in Geriatric Patients. *Journal of the American Geriatrics Society*, 50(12), 1996-2002.
- Portero-McLellan K.C., Staudt C., Silva F.R., Delbue Bernardi J.L., Baston Frenhani P., & Leandro Mehri V.A. (2010). The use of calf circumference measurement as an anthropometric tool to monitor nutritional status in elderly inpatients. *The Journal of Nutrition Health and Aging*, 14(4), 266-270.
- Raynaud-Simon A. (2009a). Dénutrition de la personne âgée : épidémiologie et conséquences. In Hébuterne X. *et al. Traité de nutrition de la personne âgée*. Springer-Verlag France, pp. 165-174.
- Raynaud-Simon A. (2009b). Malnutrition in the elderly. Epidemiology and consequences. *The European e-Journal of Clinical Nutrition and Metabolism*, 4(2), e86-e89.
- Reuben, D.B., Greendale, G.A., & Harrison, G.G. (1995). Nutrition screening in older persons. *Journal of the American Geriatrics Society*, 43, 415-425.
- Rosen, S.L., & Reuben, D.B. (2011). Geriatric assessment tools. *Mount Sinai Journal of Medicine*, 78, 489-497.
- Saunders J., & Smith T. (2010). Malnutrition: causes and consequences. *Clinical Medicine*, 10(6), 624-627.
- Secher M., Soto M.E., Villars H., Goineau C., Abellan van Kan G., & Vellas B. Le MNA en pratique clinique et en recherche : réflexion après vingt ans d'existence. In

- Hébuterne X. *et al.* *Traité de nutrition de la personne âgée*. Springer-Verlag France, pp. 159-163.
- Soini, H., Routasalo, P., & Lagström, H. (2004). Characteristics of the Mini-Nutritional Assessment in elderly home-care patients. *European Journal of Clinical Nutrition*, 58, 64-70.
- Stratton, R.J., Green, C.J., & Elia, M. (2003). *Disease related malnutrition: an evidence based approach to treatment*. Oxford, CABI Publishing Series.
- Tsai, A.C., Chang, T.L., & Wang, J.Y. (2013). Short-form Mini-Nutritional Assessment with either BMI or calf circumference is effective in rating the nutritional status of elderly Taiwanese – results of a national cohort study. *British Journal of Nutrition*, 110(6), 1126-1132.
- Walker G. (2012). Emergentology: The geriatric tsunami. *Emergency Medicine News*, 34(8), 18–24.
- British Geriatrics Society (2011). Joint working party inquiry into the quality of healthcare support for older people in care homes: A call for leadership, partnership and quality improvement. [http://www.bgs.org.uk/campaigns/carehomes/quest\\_quality\\_care\\_homes.pdf](http://www.bgs.org.uk/campaigns/carehomes/quest_quality_care_homes.pdf).
- Wang, J.Y., Tsai, A.C. (2013). The short-form mini-nutritional assessment is as effective as the full-mini nutritional assessment in predicting follow-up 4-year mortality in elderly Taiwanese. *The Journal of Nutrition Health and Aging*, 17(7), 594-598.
- Wells J.L., Dumbrell A.C. (2006). Nutrition and aging: assessment and treatment of compromised nutritional status in frail elderly patients. *Clinical Interventions in Aging*, 1(1), 67-79.
- World Health Organization (WHOa). <http://www.who.int/nutrition/topics/ageing/en/>, accessed august 2014.
- World Health Organization (WHOb). Obesity and overweight. Fact sheet no. 311, reviewed may 2014. <http://www.who.int/mediacentre/factsheets/fs311/en>
- Zaidi, A., Gasior, K., Hofmarcher, M. M., Lelkes, O., Marin, B., Rodrigues, R., et al. (2013). Active ageing index 2012. Concept, methodology, and final results. Research Memorandum/Methodology Report, European Centre Vienna. [www.euro-centre.org/data/aai/1253897823\\_70974.pdf](http://www.euro-centre.org/data/aai/1253897823_70974.pdf)
- Zimmet, P., Alberti, G., & Shaw, J. (2005). A new IDF worldwide definition of the metabolic syndrome: the rationale and the results. *Diabetes Voice*, 50(3), 31-33.